



A PREMIUM FACTORY

A SPAIN-LOCATED COFFEE FACTORY. WE ARE INTERNATIONAL SUPPLIERS OF WHOLESALE ROASTED COFFEE TO SUPERMARKETS, COFFEE SHOPS AND BUSINESSES AROUND THE WORLD,



IFA AND FDA CERTIFIED

SURESTE PRODUCTOS HOSTELEROS

C/França n.19
P.I. La Escandella (03698) Agost,
Alicante SPAIN
burdetcoffee.com
info@burdetcoffee.com



CONTACT US. WHATSAPP AVAILABLE

+34-628744644

BURDET

classic line



ROASTED IN SPAIN

In 1 kg whole bean and 250-gram ground coffee formats



BURDET CLASSIC

EXTRA CREME

PURE ROBUSTA FROM VIETNAM. SMOOTH AROMA WITH STRONG TASTE. FULL BODIED AND PERSISTENT CREME IN YOUR CUP.

DECAF

PURE DECAFFEINATED ROBUSTA FROM ASIA. SMOOTH AROMA WITH STRONG TASTE. FULL BODIED AND PERSISTENT CREME.

ESPECIALISIMO

A PERFECT BLEND OF 80% ARABICA AND 20% ROBUSTA, GIVING A NICE BALANCE WITH SOFT AND SWEET TASTE AND MEDIUM BODY.

ESPRESSO

PURE ROBUSTA FROM VIETNAM. SMOOTH AROMA WITH STRONG TASTE. FULL BODIED AND PERSISTENT CREME IN YOUR CUP.

NATURAL

A PERFECT BLEND OF 60% ARABICA AND 40% ROBUSTA, A NICE BALANCE OF SOFT AND SWEET TASTE, MEDIUM BODY AND CREAMY FINISH.

COLOMBIA SUPREMO

A PURE PREMIUM ARABICA, MILD FRUITY/CHOCOLATE, SUBTLE ACIDITY, INTENSE FRAGRANCE, NOTES OF SWEET CARAMEL



FRESHLY-ROASTED
PER ORDER

CAFEBURDET - BURDETCOFFEE.COM - BURDETCAFE.COM

BURDET

gourmet line



ROASTED IN SPAIN
In 1 kg whole bean format



BURDET GOURMET

COLOMBIA SUPREMO

A PURE PREMIUM ARABICA, MILD FRUITY/CHOCOLATE, SUBTLE ACIDITY, INTENSE FRAGRANCE, NOTES OF SWEET CARAMEL

GUATEMALA

HEAVY BODIED ARABICA WITH SUBTLE SMOKY SPICY OVERTONES WITH A SUPERB SWEET FINISH, A BALANCED LEVEL OF ACIDITY AND BODY AND RICH AROMA.

COSTA RICA

THIS COFFEE IS CLEAN, SWEET, LIGHT BODIED AND WELL-BALANCED ARABICA.

ETHIOPIA

A FRUITY ARABICA WITH A UNIQUE TASTE WITH HINTS OF BLUEBERRY, WITH LIGHT BODY, STRONG ACIDITY AND A WONDERFUL FLORAL FLAVOUR.

INDIA

MEDIUM BODIED ROBUSTA WITH SUBTLE HINTS OF WOOD, TROPICAL FRUITS AND SPICES, LOW ACIDITY AND A COMPLEX SPICY AROMA.



FRESHLY-ROASTED
PER ORDER



360° DEGREES

Burdet coffees



360° DEGREES

Burdet coffees





360° DEGREES

Burdet coffees





COFFEE FACTORY

ROASTING PLANT

LOGISTICS SHIPPING



PRODUCT	NET WEIGHT (gr.)	UT / BOX	BOX / BASE	ROWS / PALLET	BOX / PALLET
1Kg bag	1,000	6	12	8	96
250gr bag	250	16	12	12	144

PRODUCT	UT / PALLET	HEIGHT PALLET (cm)	GROSS WEIGHT BOX (Kg.)	WEIGHT PALLET
1Kg bag	576	240	6.58	631
250gr bag	2,304	267	4.50	663

ROASTING CAPACITY

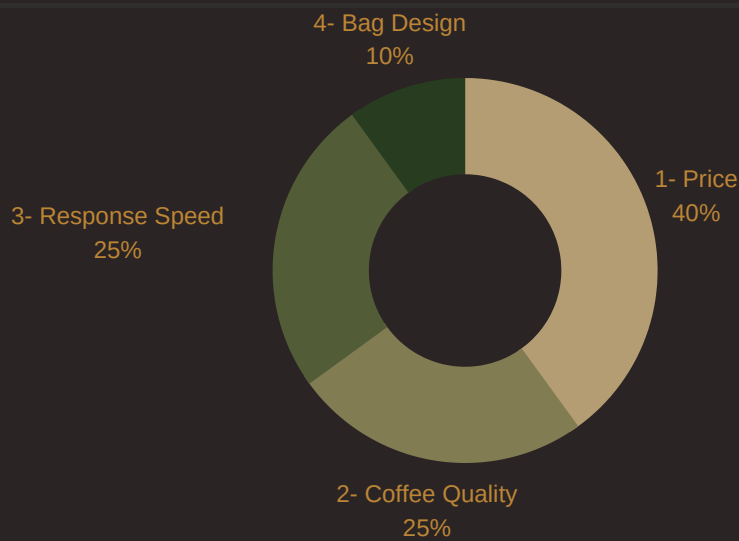
Our coffee factory has capacity to process
90 tons per month.

**WE ROAST
PER ORDER**

**QUERIES?
+34-628744644**

www.burdetcoffee.com

Why our clients choose us

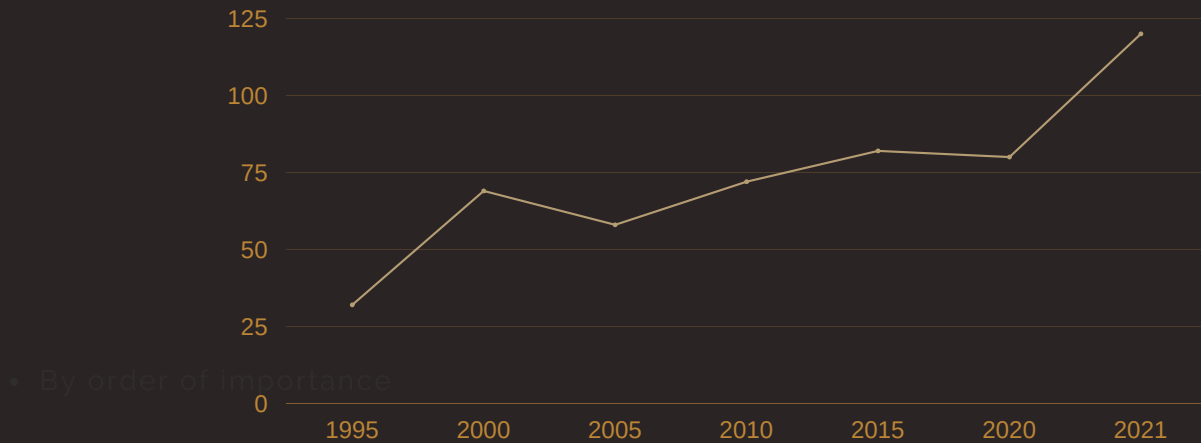


of importance

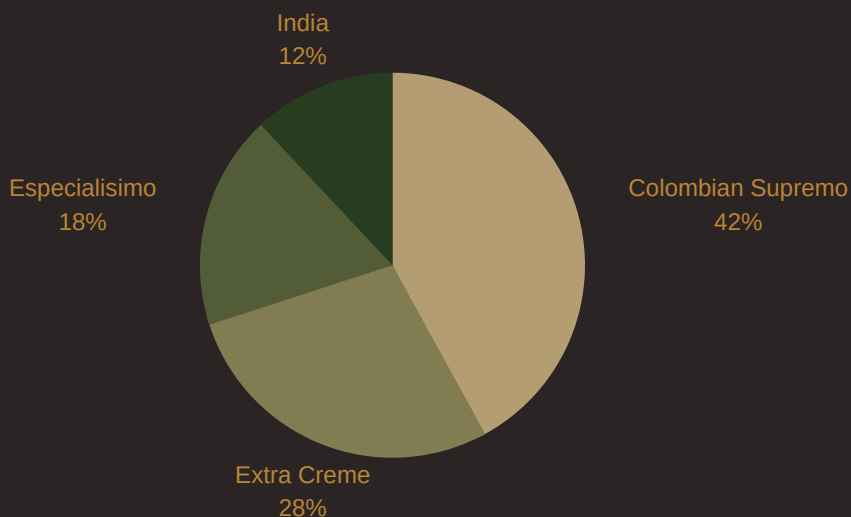
Where our top clients are



Burdet Sales



Top sellers



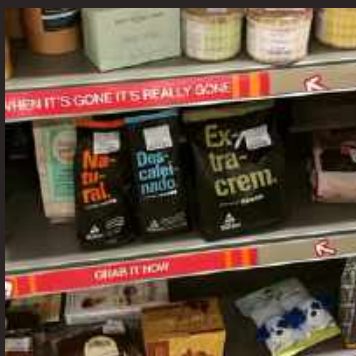
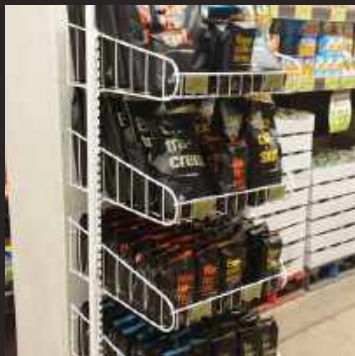
BURDET FACTORY



BURDET IN INTERNATIONAL FAIRS



BURDET AROUND THE WORLD



Important Info:

Who we are:

Our coffee factory is located in Alicante, Spain, with a 20-year history as roasters and a fully automated packaging system on-site. Our company, chosen as one of the leading coffee companies in Spain, offers a complete line of good quality and premium coffees. Our Classic line can be found in supermarkets and coffee shops around the world. The line covers all coffee tastes, from strong robustas to soft exquisite arabicas. Our second collection is a premium Single Origin line of coffees, most being fine arabicas. The prize-winning packaging design of these Single Origin Gourmet coffees are fast becoming a success around the world.

Our products have travelled far beyond our own borders. Along with promotion throughout Europe in conjunction with the Alicante Chamber of Commerce, the Valencian Export Institute (IVEX) and the Institute of Foreign Trade (ICEX), our coffee is present in many countries and in all the continents of the world.

What we sell:

We specialize in pure, high-quality roasted coffee, whole bean or ground, no mixes.

Our certifications

Our Factory is IFS and FDA certified. To have this type of certification means that the factory has had to undergo very exhaustive controls and is constantly undergoing the strictest sanitary and quality controls. Generally, in order to sell coffee in supermarkets, the coffee needs to have been roasted in a factory with IFS certification.

Video of the factory

<https://www.youtube.com/watch?v=iD-Kx7NGwYo>



Important Info:

Why clients choose to work with us:

- We supply high-quality coffee at excellent wholesale prices.
- Our factory is IFS and FDA certified.
- Very fast and efficient customer service. You are connected by whatsapp 7 days a week to your Account Manager who will always be available to help you with whatever you may need.
- We are experienced international sellers. We have experience exporting to even the most complicated regions of the world.
- Attractive eye-catching bags.
- Family-run company of 20 years history.

Client Profile:

Our clients range from small coffee shops to major restaurant and supermarket chains. From small orders by air to full containers by sea or truck.

Minimum Order:

Our minimum order is 1 box, which can be just 6 kgs. Take into account that it is much more expensive (per kilogram) to ship 6 kgs than to ship 100 kgs or 500 kgs. The bigger the order, the cheaper the price per kilogram. Example, shipping price per kilogram can cost 10 euros per kilogram for only 6 kgs of coffee, and go down to 2 euros per kilogram for 100 kilograms of coffee or 0.50 cents/kg if

Where we ship from:

We ship from Spain. Our factory is located in Alicante, which is highly positive for logistics purposes, for we can ship by sea directly from Alicante or Valencia.

What shipping options do you offer?

We ship by sea, land and air.

Important Info:

Are taxes added to prices?

- If you are an EU Company, no taxes are added to prices (you would need to provide VAT for us to not add taxes.).
- If you are a Spanish Company, 10% is added on coffee and 21% on transport.
- For the rest of the world, no taxes are added to prices.
- There are no customs between countries in the EU.

EU countries are: Austria, Belgium, Bulgaria, Cyprus, Croatia, Denmark, Slovakia, Slovenia, Spain, Estonia, Finland, France, Greece, Hungary, Ireland, Italy, Latvia, Lithuania, Luxembourg, Malta, Netherlands, Poland, Portugal, Republic Czech, Rumania, Sweden.

How many kilograms can be shipped in a 20-ft container?

11 European pallets of 576 kgs each, with a total of 6336 kgs.

How many kilograms are in a pallet?

- 250-gram bags: 576 kgs. That is 2304 bags in 144 boxes of 16 bags each.
- 1 kg-bags: 576 kgs. That is 576 bags in 96 boxes of 6 bags each.

What are some approximate shipping costs:

- By truck (Europe): approximately 1-2 euros/kg (based on 100 kgs)
- By air (Europe): approximately 3 euros/kg (based on 100 kgs)
- By air (Rest of the World): approximately 5-7 euros/kg (based on 100 kgs)
- By sea (pallet): approximately 0.75-1.5 euros/kg (based on 500 kgs)
- By sea (per container): approximately 0.10-0.15 euros/kg (for 18,000 kgs)

These prices are very general and we would need to quote per order. There can be fluctuation in prices depending on season, traffic. For example, due to COVID, transport prices have gone up which has also affected the price of the coffee.

Client may also send to pick-up at factory using own transport company.

Important Info:

Bag sizes:

- 1 kg (2.2lb): whole bean
- 250grams (8.8oz): ground.

Number of bags per box:

All orders have to be shipped out in full boxes.

- 1 kg bags are 6 bags per box.
- 250-gram bags are 16 bags per box.

Box sizes:

- 1 kg box: 30 cm x 33 cm x 28 cm
- 250-gram box: 40 cm x 20 cm x 21 cm

The boxes are brown carton boxes. For orders over 100 kgs, you may request for us to put specific text on each box (small area of around 10 cms x 10 cms).

Valves:

Our valves are high-quality one-way valves. This valve on your bag allows for the carbon dioxide to escape from inside the bag without allowing oxygen to enter the sealed bag. This valve increases flexibility for the roasters and allows us to immediately package the coffee without worry of the bag bursting on the shelf or in transit to the customer.

Samples:

To buy samples, please go to:

<https://burdetcoffee.com/shop/>

- We process samples only on Wednesdays and ship on Monday.
- We use FedEx/UPS/DHL to ship samples. Shipping times are usually 3- 5 days.

Payments:

We work with bank wire, 100% in advance.

Private label

If what you are needing is just coffee in plain black bags, we can help you.

Bag sizes we can offer you.

- 1 kg (2.2lb): whole bean
- 500 grams (1.1lb): whole bean
- 250g (8.8oz): ground. (available in white and red too)



MOQ:

50 kgs per type of coffee or size

What info of ours will be on the bag:

The only text on the bag will be on the side of the bag, with the following info:

- Expire date (2 years)
- Lot number: we assign that at moment of roast
- Our Sanitary License Number

You can ask us to add some text - laser printed in white - on the side of the bag.

Roast:

Our standard roast is medium. For orders over 100 kgs, you may choose roast: light, medium, dark.



We are looking for printed bags. Can you offer that?

Yes, for big volume, minimum 1500 kgs. Our bags are made from big rolls that an external company prepares and cost around 0.30 or 0.40/bag with valve. We can send you template to design, once finished we send it to the roll company for a quote. We would have to roast all your coffee at once, but, if you do not have enough storage space, we can store it for you. The expire date is 2 years.



PREMIUM-QUALITY COFFEE FOR PREMIUM CLIENTS